

PRODUCT INFORMATION PACKET

Model No: 056B34D2024

Catalog No: J037

1.5 HP Jet Pump Motor, 1 phase, 3600 RPM, 115/208-230 V, 56J Frame, ODP
Jet Pump Motors



Regal and Marathon are trademarks of Regal Rexnord Corporation or one of its affiliated companies.
©2021 Regal Rexnord Corporation, All Rights Reserved. MC017097E



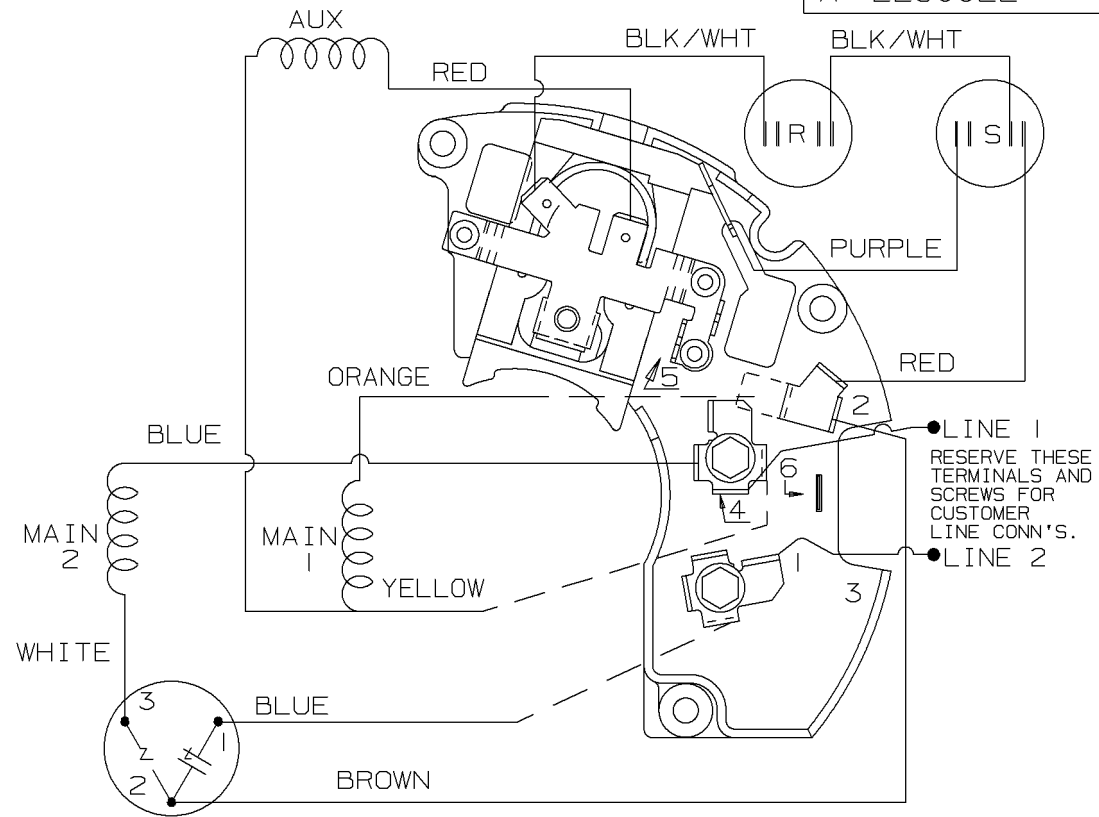
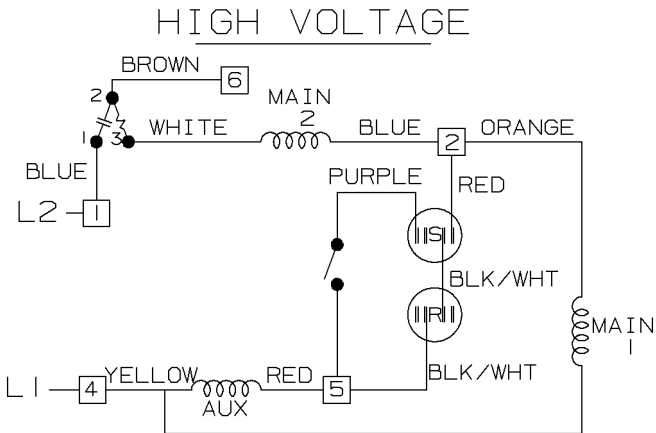
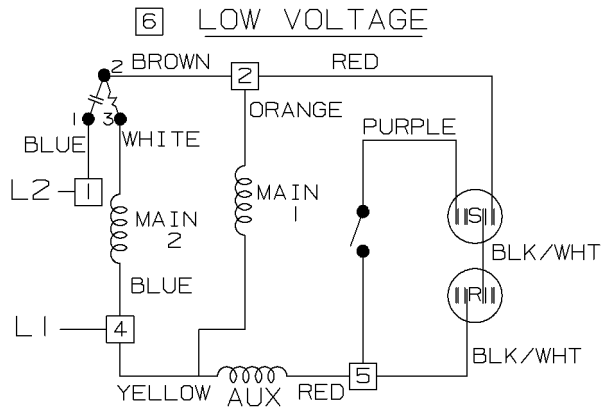
Nameplate Specifications

Output HP	1.50 Hp	Output KW	1.1 kW
Frequency	60 Hz	Voltage	115/208-230 V
Current	13.4/7.4-6.7 A	Speed	3450 rpm
Service Factor	1.3	Phase	1
Efficiency	78.7 %	Power Factor	95.8
Duty	Continuous	Insulation Class	B
Design Code	NO DESIGN CODE	KVA Code	H
Frame	56J	Enclosure	Drip Proof
Thermal Protection	Automatic	Ambient Temperature	40 °C
Drive End Bearing Size	6203	Opp Drive End Bearing Size	6203
UL	Recognized (Not Protector)	CSA	Y
CE	Y	IP Code	22
Number of Speeds	1		

Technical Specifications

Electrical Type	Capacitor Start Capacitor Run	Starting Method	Across The Line
Poles	2	Rotation	Fixed Clockwise
Resistance Main	0 Ohms	Mounting	Round
Motor Orientation	Horizontal	Drive End Bearing	Ball
Opp Drive End Bearing	Ball	Frame Material	Rolled Steel
Shaft Type	T	Overall Length	12.43 in
Shaft Diameter	0.630 in	Shaft Extension	1.88 in
Assembly/Box Mounting	F1 ONLY		
Outline Drawing	A-SS75938-800	Connection Drawing	A-EE9002L

This is an uncontrolled document once printed or downloaded and is subject to change without notice. Date Created:10/11/2021



RESERVE THESE
TERMINALS AND
SCREWS FOR
CUSTOMER
LINE CONN'S.

VIEWING TERM END

LOW VOLTAGE CW ROTATION SHOWN.

FOR HIGH VOLTAGE
CONNECT BROWN TERM 2 TO TERM 6.
CONNECT BLUE TERM 4 TO TERM 2.

DUAL VOLTAGE
CAP START/CAP RUN
NOT REVERSIBLE WITH
OVERLOAD PROTECTION

DASH LINES INDICATE LEADS CONNECTED
TO MOTOR SIDE OF SWITCH.

FOR CORD CONNECTIONS::
CONNECT BLACK LINE TO TERM.1
CONNECT WHITE LINE TO TERM.4
CONNECT GREEN TO GR. SCREW IN BKT.

5	01-28-1991	REVISED LINE 2 LOCATION CN 6427	RM	✓ MAX. SURFACE ROUGHNESS UNLESS NOTED OTHERWISE	UNLESS OTHERWISE SPECIFIED DIMENSIONS ARE IN INCHES TOL. ON XX± XXX±.005 XXXX±.0005 ANGLES±			
4	06-01-1990	ADDED INSTRUCTIONS FOR CORD CONN.	TOM	MATL SPEC				DRAWN BY TOM 05-22-1989
3	01-31-1990	INTERCHANGED BLUE WITH WHITE ON TERM 2.	TOM	FINISH				CHKD BY DRN 5-23-1989
REV	DATE	CHANGE	NAME	REFERENCE DRW.	WAUSAU, WISCONSIN 54401			APPD BY GK 04-08-1994
				PART NAME CONNECTION DIAGRAM 48 FR. DUAL VOLTAGE NOT REVERSIBLE	DRWG NO A- EE9002L			

SHOP BOOK

PURCHASED

DISTRIBUTION - WA - LB - WP - LM - BR

CADD FILE NO.

EE9002L

